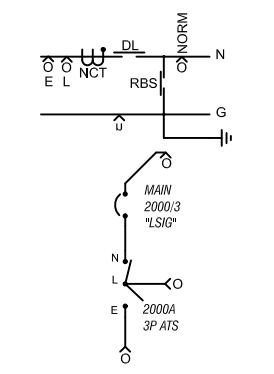
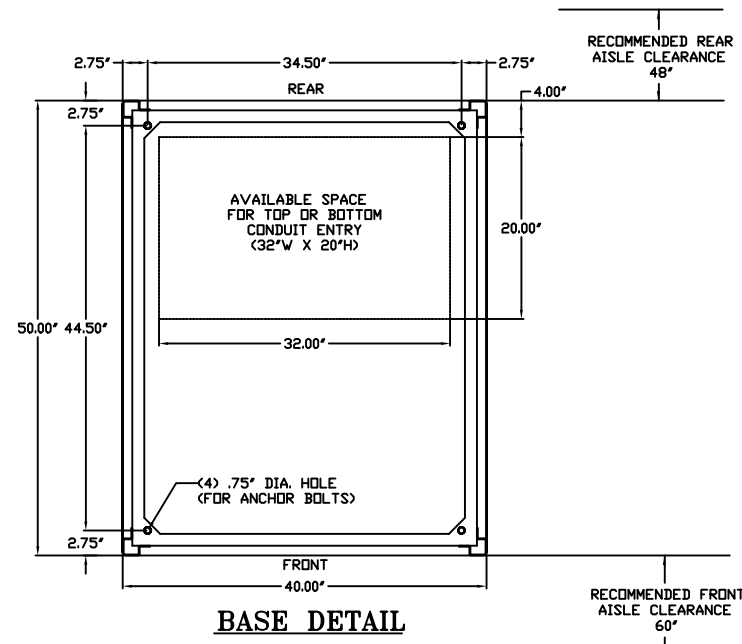


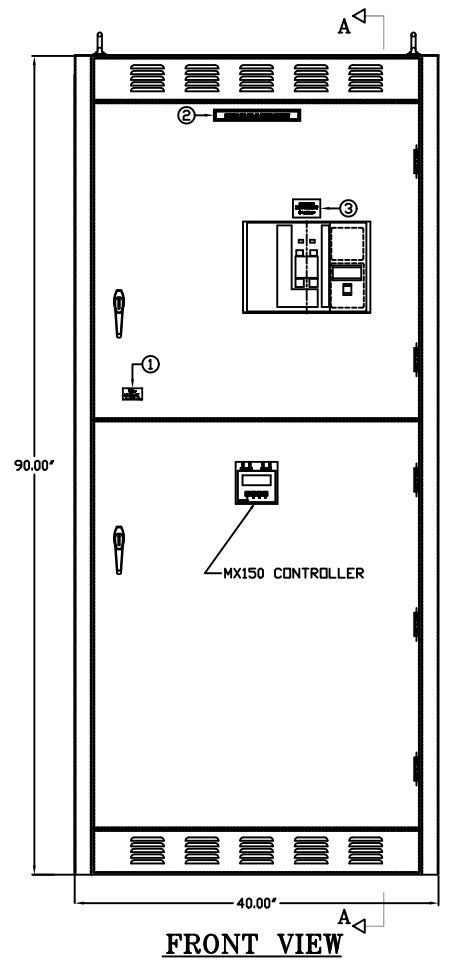
REVISIONS				
REV.	ECN	DESCRIPTION	DATE	APPROVED
B	-	MODIFIED	03-11-2009	T.G.A. K.P.

NOTES		
SYSTEM RATING: 65KA		
ENCLOSURE:	NEMA 1 TYPE	LABELS
INSTALLATION:	FLOOR MOUNTED	1. Y320082 UL891 CON INNER SIDE OF DOOR
FINISH:	ANSI 61 GRAY	2. V-1811 SUITABLE FOR AS SERVICE ENTRANCE
ACCESS:	REAR & SIDES	3. YA32695 SERVICE DISCONNECT
COMPONENTS RATING AND SPECIFICATIONS (ATS):		
SERVICE ENTRANCE:	1600-2000A, 3 POLE UNIT, FULLY RATED	4. YA90026 UL COMPLIANCE SHEET
SHORT CIRCUIT WITHSTAND AND CLOSING RATING (C/L):	100kA @ 480V	5. YA31193 SECTION AMPACITY
CIRCUIT BREAKER:		
GE PB11-ICCB, MICRO-VERSA TRIP PLUS, LSIG TRIP UNIT		6. YA30680 500-1000 MCM TORQUE
MOUNT TYPE:	STATIONARY	7. YA30601 TYPE 1 ENCLOSURE
SIZE:	2000AF/2000AT-1600AT	8. YA30602 NEUTRAL TO GROUND LINK
SHORT CIRCUIT INTERRUPT RATING:	65kAIC @ 480V	9. YA31238 HIGH VOLTAGE DANGER
UL LABEL:	991 *SUITABLE TO USE AS SERVICE ENTRANCE EQUIPMENT*	
BUS:		
MATERIAL:	COPPER 1000A/in (2-1/4" X 4" PHASE/NEUTRAL) (1-1/4" X 3" GROUND BUS)	
FINISH:	SILVER PLATED	
CABLE:		
S2-N	(8)-600Kcmil PER PHASE & NEUTRAL	
LOAD	(8)-600Kcmil PER PHASE & NEUTRAL	
EMERGENCY	(8)-600Kcmil PER PHASE & NEUTRAL	
GROUND	(24)-1/0-250Kcmil	

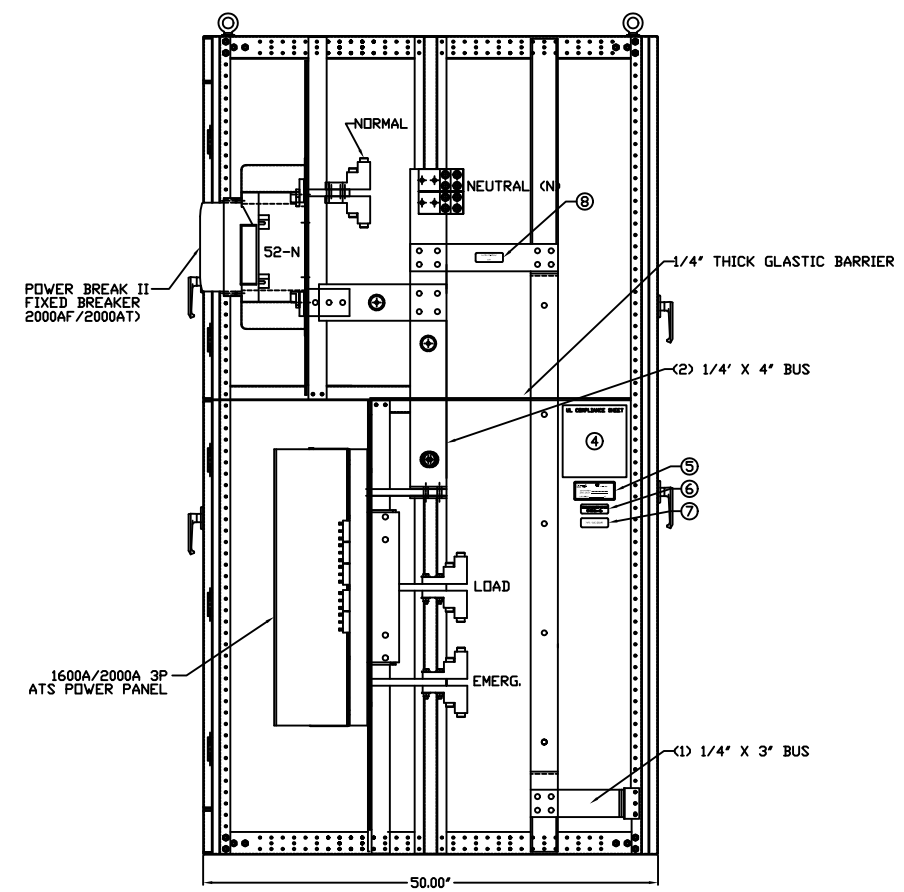


SYMBOL LEGEND
 O & u = MECH. LUGS (SEE TABLE FOR DETAILS)
 NCT = NEUTRAL CURRENT SENSOR
 RBS = REMOVABLE GROUND STRAP
 DL = NEUTRAL DISCONNECT LINK

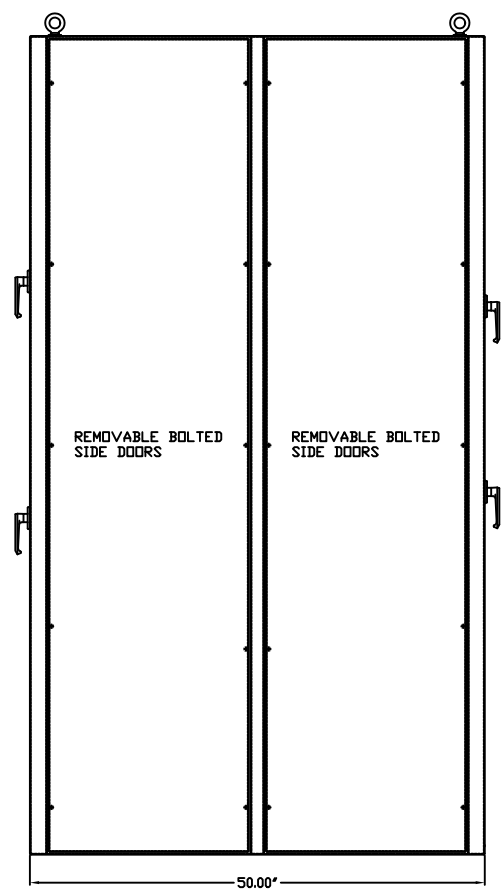
ONE LINE DIAGRAM (2000A)



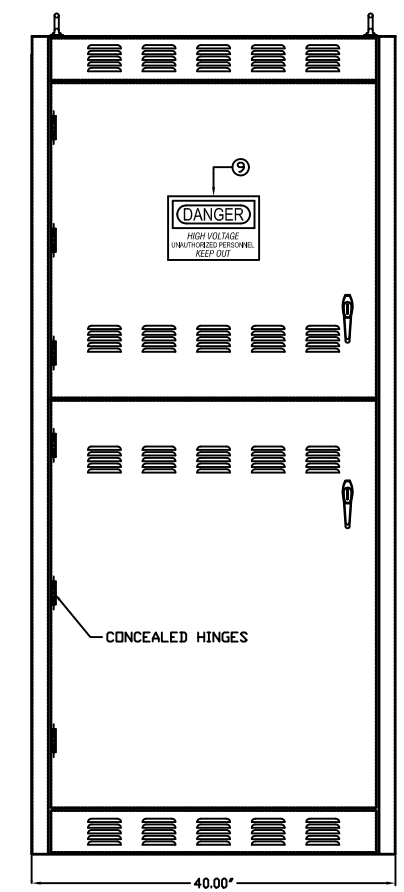
FRONT VIEW



SECTION "A - A"



RIGHT SIDE VIEW



REAR VIEW

**NEMA_1_ENCLOSURE
3_POLES_ATS**

**NOT CERTIFIED
FOR CONSTRUCTION**

GE PROPRIETARY AND CONFIDENTIAL INFORMATION
 This document is the property of General Electric Company (GE) and contains proprietary information of GE. This document is loaned on the express condition that neither it nor the information contained therein shall be disclosed to others without the express written consent of GE Industrial Systems, and that the information shall be used by the recipient only as approved expressly by GE Industrial Systems. This document shall be returned to GE upon its request. This document may be subject to certain restrictions under U.S. export control laws and regulations.

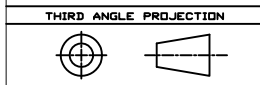
FOR ADDITIONAL INFO REFER TO	SIGNATURES	DATE
APPLIED PRACTICES	MODEL T.G.A	02-27-2008
UNLESS OTHERWISE SPECIFIED DIMENSIONS ARE IN INCHES	DETAIL	
TOLERANCES ON:	CHECKED	
2 PL. DECIMALS ± .020	ENGRG T.G.A	
3 PL. DECIMALS ± .005	MFG	
ANGLES ± 1°	QUALITY	
FRACTIONS ± 1/64	ISSUED	
FINISH ✓	DRAWING FILE: ZTGSE20(3P-N1)-OUT	SIZE: N/A
	MODEL / ASSEMBLY FILE:	CAGE CODE: N/A
	# CTQs	DWG NO. ZTGSE20(3P-N1)-OUT
	CRITICAL TO QUALITY CHARACTERISTIC	SCALE: NONE

GE Zenith Controls

TITLE: 1600A/2000A SERVICE ENTRANCE (3P-N1) OUTLINE DRAWING

FIRST MADE FOR: ZTGSE20(3P-N1)

SHEET 1 OF 1



AutoCad Generated