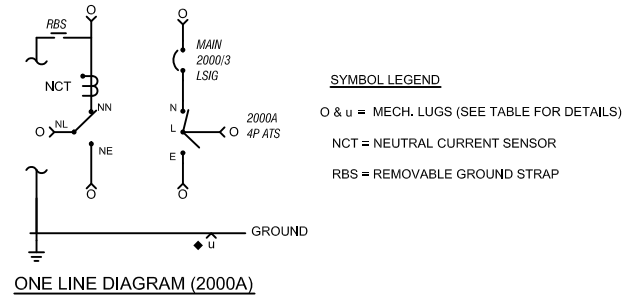
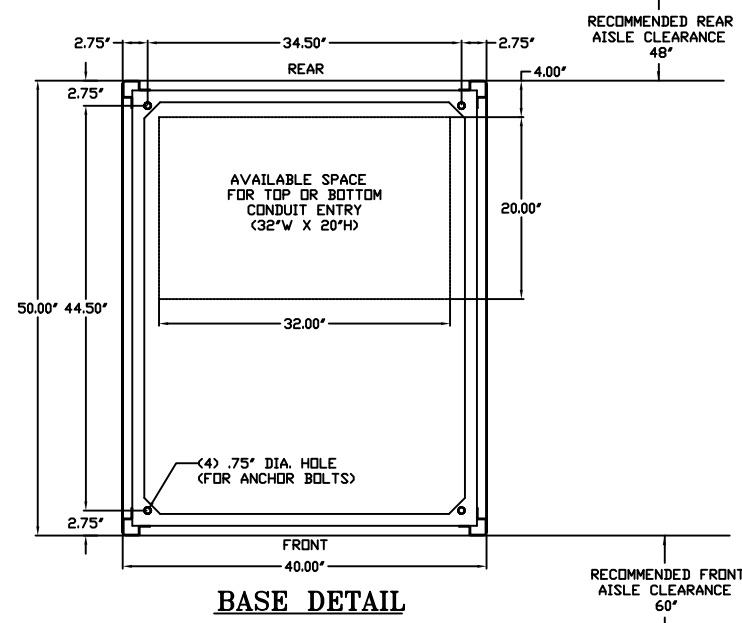
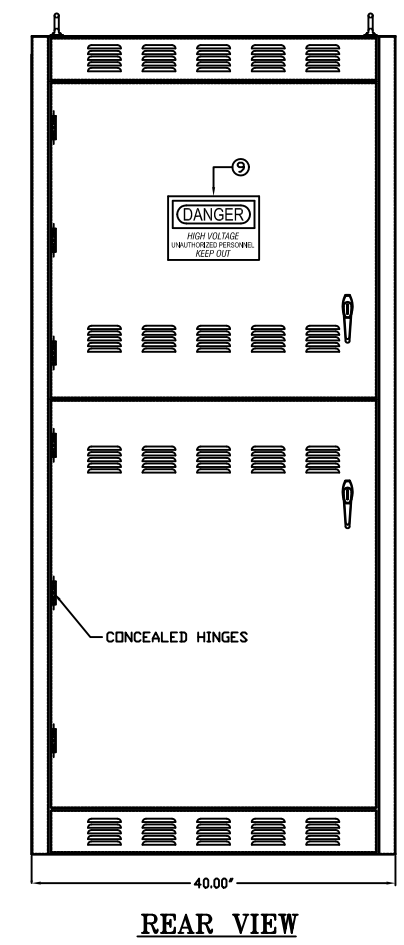
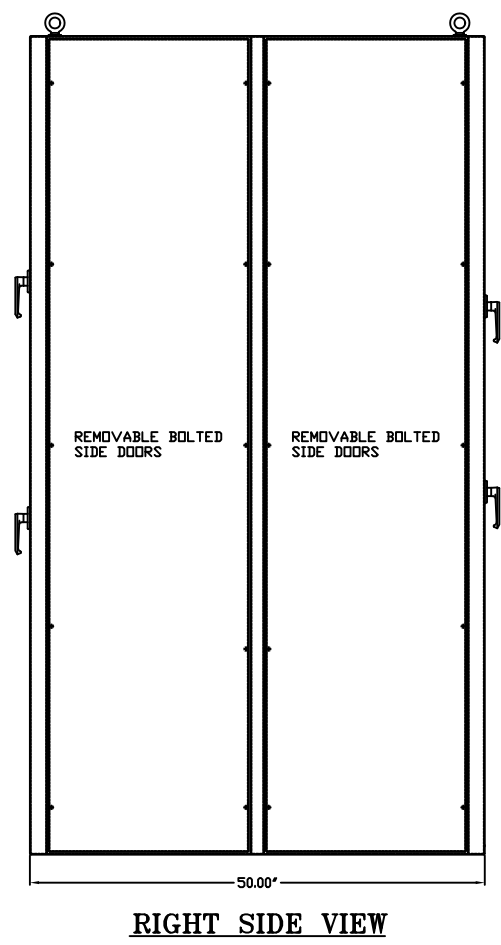
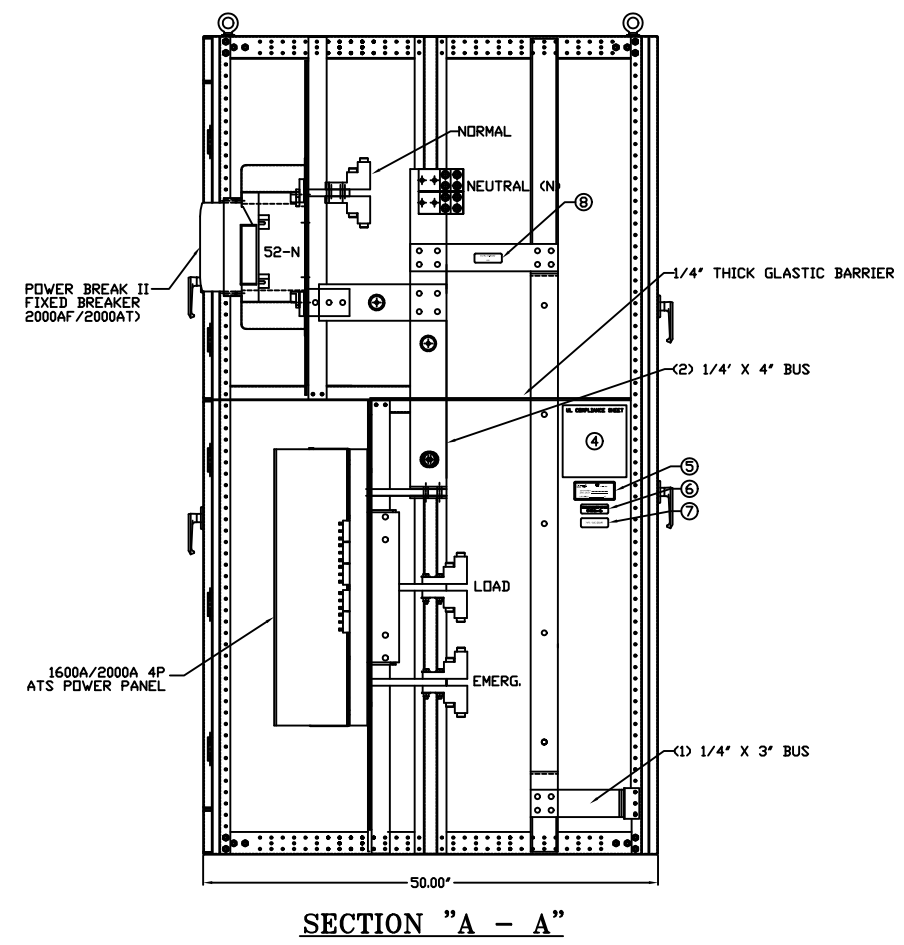
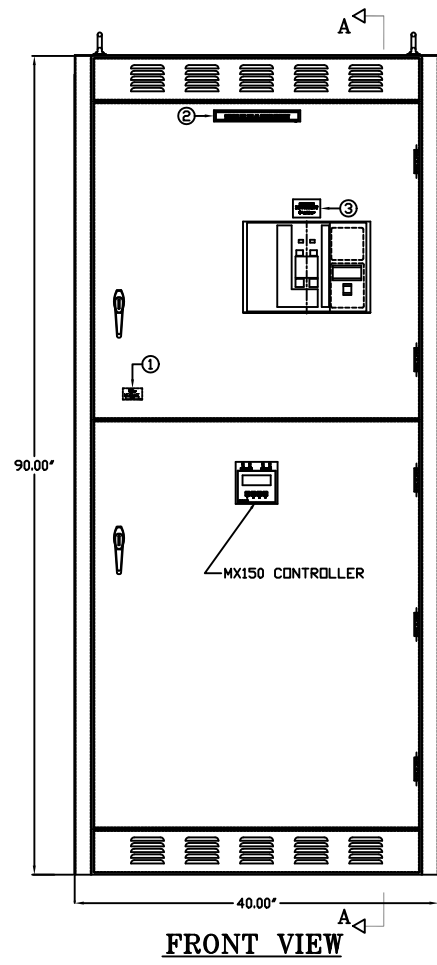


REVISIONS				
REV.	ECN	DESCRIPTION	DATE	APPROVED
B	-	MODIFIED	03-11-2009	T.G.A. K.P.



NOTES			
SYSTEM RATING: 65KA			
ENCLOSURE:	NEMA 1 TYPE	LABELS	
INSTALLATION:	FLOOR MOUNTED	1. Y320082	UL891 (ON INNER SIDE OF DOOR)
FINISH:	ANSI 61 GRAY	2. V-1811	SUITABLE FOR AS SERVICE ENTRANCE
ACCESS:	REAR & SIDES	3. YA32695	SERVICE DISCONNECT
COMPONENTS RATING AND SPECIFICATIONS (ATS):		4. YA90026	UL COMPLIANCE SHEET
SERVICE ENTRANCE:	1600-2000A, 4 POLE UNIT, FULLY RATED	5. YA31193	SECTION AMPACITY
SHORT CIRCUIT WITHSTAND AND CLOSING RATING (UL):	100kA @ 480V	6. YA30600	500-1000 MCM TORQUE
CIRCUIT BREAKER:		7. YA30601	TYPE 1 ENCLOSURE
GE PB11-ICCB, MICRO-VERSA TRIP PLUS, LSIG TRIP UNIT		8. YA30602	NEUTRAL TO GROUND LINK
MOUNT TYPE:	STATIONARY	9. YA31238	HIGH VOLTAGE DANGER
SIZE:	2000AF/2000AT-1600AT		
SHORT CIRCUIT INTERRUPT RATING	65kAIC @ 480V		
UL LABEL	B91		
	SUITABLE TO USE AS SERVICE ENTRANCE EQUIPMENT		
BUS:			
MATERIAL:	COPPER 1000A/in (2-1/4" X 4" PHASE/NEUTRAL)		
	(1-1/4" X 3" GROUND BUS)		
FINISH	SILVER PLATED		
CABLE:			
S2-N	(8)-600kcmil PER PHASE & NEUTRAL		
LOAD	(8)-600kcmil PER PHASE & NEUTRAL		
EMERGENCY	(8)-600kcmil PER PHASE & NEUTRAL		
GROUND	(24)-1/0-250kcmil		



**NEMA_1_ENCLOSURE
4_POLES_ATS**

**NOT CERTIFIED
FOR CONSTRUCTION**

GE PROPRIETARY AND CONFIDENTIAL INFORMATION
This document is the property of General Electric Company (GE) and contains proprietary information of GE. This document is loaned on the express condition that neither it nor the information contained therein shall be disclosed to others without the express written consent of GE Industrial Systems, and that the information shall be used only as approved expressly by GE Industrial Systems. This document shall be returned to GE upon its request. This document may be subject to certain restrictions under U.S. export control laws and regulations.

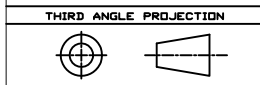
FOR ADDITIONAL INFO REFER TO	SIGNATURES	DATE
APPLIED PRACTICES	MODEL T.G.A	02-27-2008
UNLESS OTHERWISE SPECIFIED DIMENSIONS ARE IN INCHES	DETAIL	
TOLERANCES ON:	CHECKED	
2 PL. DECIMALS ± .020	ENGRG T.G.A	
3 PL. DECIMALS ± .005	MFG	
ANGLES ± 1°	QUALITY	
FRACTIONS ± 1/64	ISSUED	
FINISH ✓	DRAWING FILE: ZTGSE20(4P-N1)-OUT	SIZE: N/A
	MODEL / ASSEMBLY FILE:	CAGE CODE: N/A
	# CTQs: 0	DWG NO. ZTGSE20(4P-N1)-OUT
	CRITICAL TO QUALITY CHARACTERISTIC	SCALE: NONE

GE Zenith Controls

TITLE: 1600A/2000A SERVICE ENTRANCE (4P-N1)
OUTLINE DRAWING

FIRST MADE FOR: ZTGSE20(4P-N1)

SHEET 1 OF 1



AutoCad Generated